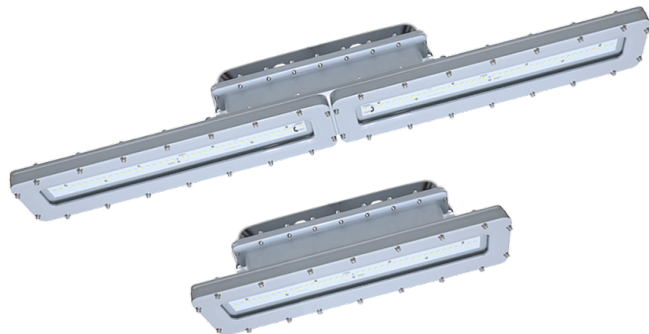


# HJIL Series

## The STEWARD

Hazardous Location Lighting



High Vibration  
RESISTANCE



SOLAS RAY™ LIGHTING

5935 West 84th St. | Indianapolis, IN 46278 | 1-800-840-5635 | www.SolasRay.com

Cat. #	Type
Notes	

### CERTIFICATIONS / RATINGS



### CLASS / DIVISION

- Class I, Div 1, Groups C, D
- Class I, Div 2, Groups A, B, C, D
- Class II, Div 1, Groups E, F, G
- Class II, Div 2, Groups F, G
- Class III

### KEY FEATURES AND BENEFITS

- High ambient temperature capabilities: -40°C to 60°C (140°F).
- \*DLC V5.1 Standard (4000K/5000K with 120° beam angle only).
- Internal EM battery option (15W / 90 min).
- Corrosion proof – coated aluminum alloy (copper free) housing.
- Marine rated corrosion resistant powder coat.
- Heavy-duty and high impact resistance.
- Paint/spray listed for use in paint or powder booths.

### SPECIFICATIONS

<b>Voltage</b>	120-277vAC / 200-480vAC
<b>Wattage</b>	2' models: 20w / 40w / 60w 4' models: 60w / 80w / 100w / 120w
<b>Color Temp</b>	4000 / 5000 Kelvin
<b>Ambient Temperature</b>	-40°C (-40°F) to 60°C (140°F) (-10°C to 60°C with EM battery)
<b>Housing</b>	Coated copper free aluminum alloy
<b>Color</b>	Gray
<b>Lens</b>	Flat tempered glass
<b>Lifetime</b>	70,000 hrs L <sub>70</sub>

<b>CRI</b>	80
<b>Beam Angle</b>	120°
<b>Efficacy</b>	up to 140 lm/w
<b>Warranty</b>	5 Year Limited Warranty - Fixture 3 Year Limited Warranty - Battery

### LUMENS

20W	40W	60W	80W	100W	120W
2,800	5,600	8,400	12,000	14,000	16,800

### PRODUCT ORDERING SELECTION

<input type="checkbox"/> HJIL21 (2 ft)	<input type="checkbox"/> 020 - 20w <input type="checkbox"/> 040 - 40w <input type="checkbox"/> 060 - 60w	<input type="checkbox"/> 40 - 4000K <input type="checkbox"/> 50 - 5000K	<input type="checkbox"/> U - 120-277vAC <input type="checkbox"/> 48 - 200-480vAC	<input checked="" type="checkbox"/> 120 - 120°	<input type="checkbox"/> HJUB - Universal Yoke Bracket <input type="checkbox"/> HJPP - Pendant Mount <input type="checkbox"/> HJSPM - Suspension Mount	<input type="checkbox"/> EM - Emergency Battery Backup - 15W (120-277VAC models only)
<input type="checkbox"/> HJIL41 (4 ft)	<input type="checkbox"/> 060 - 60w <input type="checkbox"/> 080 - 80w <input type="checkbox"/> 100 - 120w <input type="checkbox"/> 120 - 120w					

# HJIL Series

## The STEWARD



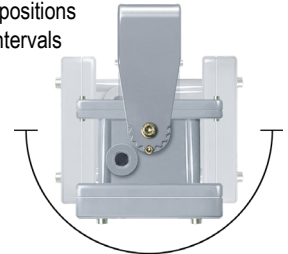
5935 West 84th St. | Indianapolis, IN 46278 | 1-800-840-5635 | www.SolasRay.com

### MOUNTING OPTIONS

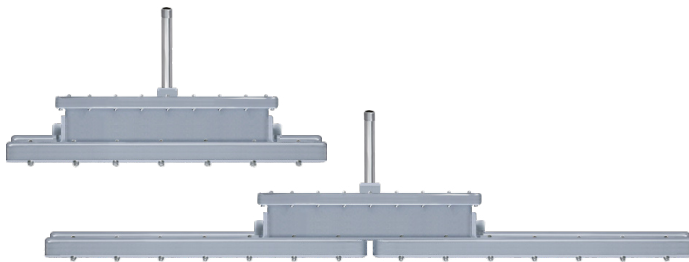
#### #HJUB - Universal Yoke Bracket



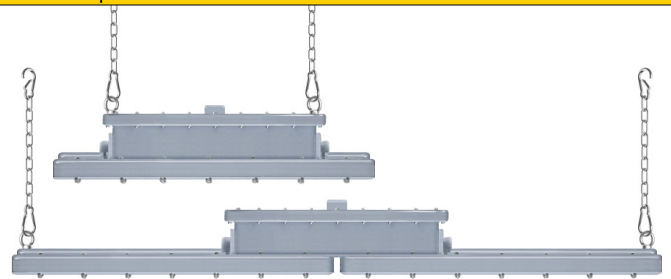
180° in 9 positions  
at 22.5° intervals



#### #HJPP - Pendant Mount



#### #HJSPM - Suspension Mount



### EM BATTERY OPTION (INTERNAL)

Available for 120-277VAC models only.

<b>Input Rating</b>	AC 120-277V
<b>Output Wattage</b>	15W
<b>Battery Capacity</b>	2000 mAh
<b>Battery Run-time</b>	90 minutes
<b>Charge Time</b>	≥ 24 hours
<b>Ambient Temperature</b>	-10°C (14°F) to 60°C (140°F)
<b>Battery Warranty</b>	3 Year Limited Warranty

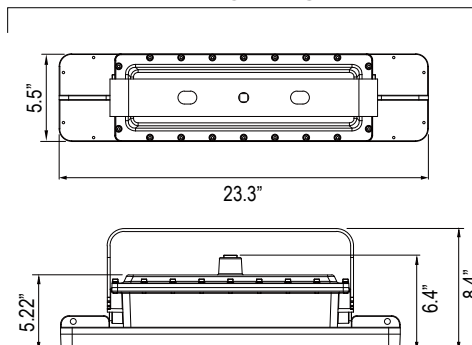


### WEIGHTS AND DIMENSIONS

#### WEIGHTS

2'	4'
26.5 lb	40.75 lb

#### 2' MODELS



#### 4' MODELS

