

# SOMP Series

## The SOLAR MINI PHOTON™ Solar Powered LED Area Lighting



5935 West 84th St. | Indianapolis, IN 46278 | 1-800-840-5635 | www.SolasRay.com

Cat. #	Type
Notes	

### KEY FEATURES AND BENEFITS

- Convenient LED light, solar panel, and battery integrated into a single unit.
- Adjustable angle.
- Up to 6,000 lumens, 10, 20 and 30 watt versions available.
- High conversion efficiency mono-crystalline photovoltaic solar panel.
- Long life and high temperature resistance LiFePO4 battery.
- 8 hour charge can power light up to 4 days in intelligent control mode, optional remote control available for intelligent control reprogramming.
- PIR motion sensor.
- Hybrid dual-powered option available - AC power takes over if battery is low.



Includes pole/side mount.  
Allows for up to 15° tilt up or  
down. Fits 2 3/8" tenon.

Optional remote control  
available for adjusting  
intelligent controls. See p2.



### SPECIFICATIONS

<b>Wattage</b>	10w / 20w / 30w
<b>Color Temp</b>	2700 / 3000 / 4000 (Std) / 5000 Kelvin
<b>Housing</b>	Aluminum Alloy
<b>Color</b>	Silver
<b>Lens</b>	Polycarbonate
<b>Lifetime</b>	101,000 hrs L70
<b>Distribution Pattern</b>	Type II med (Std) / Type III short / Type V short
<b>Working Mode</b>	Intelligent control
<b>Control</b>	Timer dimming / PIR sensor
<b>Ambient Temperature</b>	0°C (32°F) to 50°C (122°F) recommended, for colder temps - see Application Guide
<b>Protection</b>	IP65
<b>Warranty</b>	3 Year Limited Warranty

#### LUMENS

Model	10w	20w	30w
<b>Lumens</b>	2,000	4,000	6,000

#### BATTERY (Built-In)

With their high temperature resistance, large current discharge and long life cycle rating, LiFePO4 batteries are preferable for use in solar powered lights.


<b>Type</b>	LiFePO4 (Lithium Iron Phosphate)
<b>Run Time</b>	Up to 4 days (intelligent control) on full charge Up to 8 hours at 100% brightness
<b>Life Cycle</b>	>2000 cycles
<b>Capacity</b>	6Ah (10w) / 12Ah (20w) / 18Ah (30w)
<b>Charge Time</b>	>3 hrs (10w) / >6 hrs (20w) / >9hrs (30w)

#### SOLAR PANEL (Built-In)

Mono-crystalline is the preferred type of panel for solar powered lights due to their superior efficiency and lifespan. Features a 21% conversion rate, which is 30% higher compared to traditional solar panels.

<b>Type</b>	High efficiency mono-crystalline
<b>Charge Controller</b>	PWM (Pulse Width Modulation - DC to DC converter that matches charge voltage to battery voltage as it varies due to charge level)

### PRODUCT ORDERING SELECTION

<b>SOMP</b>				<b>SI</b>		
<b>Series</b>	<b>Watts</b>	<b>Kelvin</b>	<b>Distribution Pattern</b>	<b>Color</b>	<b>Mounting Options</b>	<b>Other Options</b>
<input checked="" type="checkbox"/> SOMP	<input type="checkbox"/> 010 - 10w <input type="checkbox"/> 020 - 20w <input type="checkbox"/> 030 - 30w	<input type="checkbox"/> 27 - 2700K <input type="checkbox"/> 30 - 3000K <input type="checkbox"/> 40 - 4000K (Std) <input type="checkbox"/> 50 - 5000K	<input type="checkbox"/> II - Type II Medium (Std) <input type="checkbox"/> III - Type III Short <input type="checkbox"/> V - Type V Short	<input checked="" type="checkbox"/> SI - Silver	<input type="checkbox"/> LP - L-Shape Pole Mount Adaptor <input type="checkbox"/> LS - L-Shape Square Pole Mount Adaptor <input type="checkbox"/> TP - T-Shape Pole Mount Adaptor <input type="checkbox"/> TS - T-Shape Square Pole Mount Adaptor <input type="checkbox"/> PCWM - Pole Clamp / Wall Mount Bracket	<input type="checkbox"/> AAM - Adjustable Angle Module (Allows led panels to tilt +/- 30°) <input type="checkbox"/> HYB - Hybrid Dual-Powered <input type="checkbox"/> BS - Bird Spikes
Include 1 SOPH-REM Remote Control 						

SOL M-PHOTON 3.25 SI-06790

Specifications and data are subject to change without notice.

# SOMP Series

The SOLAR MINI PHOTON™



5935 West 84th St. | Indianapolis, IN 46278 | 1-800-840-5635 | www.SolasRay.com

## MOUNTING OPTIONS

### Included Pole/Side Mount (Tenon Slipfitter)

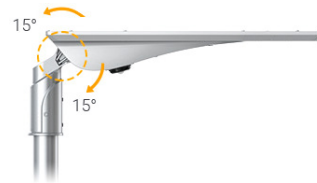
Included mount allows for pole top mounting or side entry mounting. Allows for upward or downward tilt up to 15°. For 2 3/8" tenon.



Pole top configuration



Side entry configuration



### #LP - L-Shape Pole Mount



Fits 3 1/2" pole top or tenon

### #LS - L-Shape Square Pole Mount



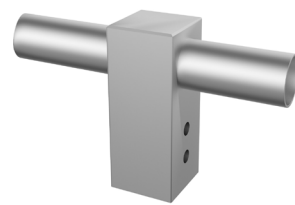
Fits 4" square pole

### #TP - T-Shape Pole Mount



Fits 2 3/8" tenon

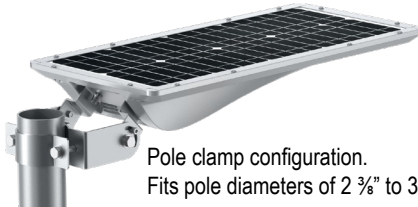
### #TS - T-Shape Square Pole Mount



Fits 4" square pole

### #PCWM - Pole Clamp / Wall Mount Bracket

Functions as both a pole clamp or wall mount. Allows for 30° angle adjustment up or down.



Pole clamp configuration.  
Fits pole diameters of 2 3/8" to 3"



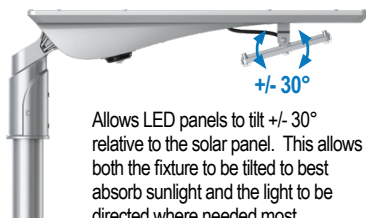
Wall mount configuration.

## OTHER OPTIONS AND ACCESSORIES

### #AAM - Adjustable Angle Module



Single panel version shown.  
Both panels adjust in dual  
panel models.



Allows LED panels to tilt +/- 30°  
relative to the solar panel. This allows  
both the fixture to be tilted to best  
absorb sunlight and the light to be  
directed where needed most.

### #SOPH-REM - Remote Control

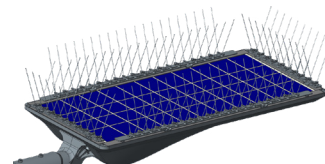
**Remote Control**  
Required to change  
intelligent control from  
default settings.

**Must be ordered  
separately.**

P/N: SOPH-REM



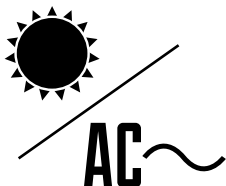
### #BS - Bird Spikes



Prevents birds from landing or nesting on  
the solar panel.

### #HYB - Hybrid Dual-Power

## HYBRID



### Never run out of battery power

When the battery storage is depleted (the battery voltage is lower than 9.6V), the Solar Photon™ will automatically switch to AC supplied power. When the solar power supply sufficiently recharges the battery, the system will automatically switch back to battery power.

### Specifications

Input Voltage: 100-277 VAC, 50/60 Hz  
Power Factor: >0.5 (10W/20W) / >0.9 (30W)  
Surge Protection: 6kV line-earth / 4kV line-line

### Features

- Constant current LED driver added
- Hybrid controller
- 6Ah battery for 10W/20W/30W

**Note:** Hybrid  
models require a  
different remote  
control than  
standard models.



Include 1 SOPH-HYR  
Remote Control

# SOMP Series

The SOLAR MINI PHOTON™



5935 West 84th St. | Indianapolis, IN 46278 | 1-800-840-5635 | www.SolasRay.com

## APPLICATION GUIDE

### TEMPERATURE ZONE MAP



Temperature affects battery performance reducing the total output of a fully charged battery as it gets colder. Recommended use of the Solar Photon™ for the above temperature zones are as follows:

**Zone 1** - Not recommended for use in this zone.

**Zone 2** - May be used in this zone. We recommend reducing intelligent control settings to 1/2 brightness of factory default settings.

**Zone 3** - Recommended for this zone.

## INTELLIGENT CONTROL MODE

Factory default settings of intelligent control mode. Use optional remote to change settings (purchased separately).

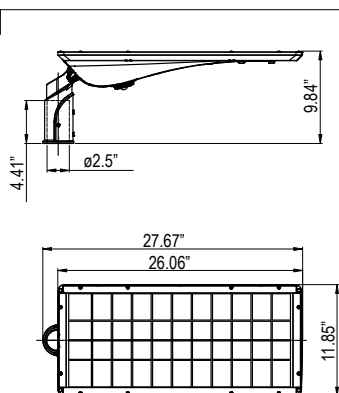
DAYTIME	DUSK	FIRST 4 HOURS OF NIGHT	SECOND 4 HOURS OF NIGHT	SECOND 4 HOURS OF NIGHT	UNTIL DAWN
The light continuously charges during daylight hours.	100% brightness is maintained for the first 30min of night.	50% brightness when presence is detected in first 4 hours.	10% brightness when no presence is detected in first 4 hours.	20% brightness when presence is detected in second 4 hours.	10% brightness when no presence is detected in second 4 hours.
				10% brightness when no presence is detected in second 4 hours.	10% brightness for the remainder of the night.

## WEIGHTS, EPA AND DIMENSIONS

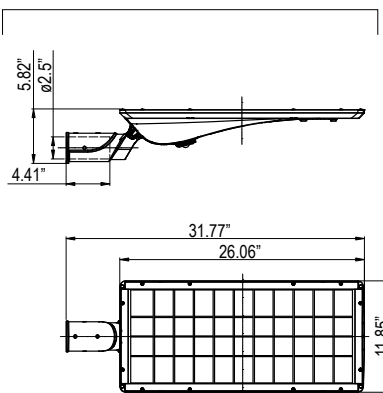
### WEIGHTS / EPA / BUG

Model	10w	20w	30w
Weight	15.87 lb	17.42 lb	18.74 lb
EPA	2.56 ft²		
B (Back)	1	1	1
U (Up)	0	0	0
G (Glare)	0	1	1

### POLE TOP CONFIGURATION



### SIDE ENTRY CONFIGURATION



### POLE CLAMP / WALL MOUNT

