

HB Series

The PERFORMANCE™

Wireless Control High Bay LED Lighting

by **RCA** COMMERCIAL ELECTRONICS



5935 West 84th St. | Indianapolis, IN 46278 | 1-800-840-5635 | www.SolasRay.com

Cat. #	Type
Notes	

CERTIFICATIONS / RATINGS



IP65



KEY FEATURES AND BENEFITS

- ZigBee® ready bay light quickly converts to a SMART (IOT) product with Sensor Connect feature.
- Combination of high lumen output with low glare.
- DLC 5.1 Premium listed.
- 90° beam angle (65° optional on 136W models).
- Impressive up to 140 lm/W efficacy.
- Fully gasketed and sealed, rated for NSF and Wet Locations.
- PET diffuser lens standard.
- External driver increases performance in high ambient temperatures.
- 0-10V dimming drivers are standard.
- Easily apply occupancy motion sensor.
- Features the "power-connect" cable joiner with 10' cord standard.
- Center mounting loop and 2 aircraft cable mounting loops included (does not include cables).
- Optional bracket and aircraft cable kit mounting available.
- Trade Agreement Act compliant.



Optional IP65
Multi-Sensor



SPECIFICATIONS

Voltage	120-277 VAC
Wattage	93W / 136W
Color Temp	4000 / 5000 Kelvin
Housing	Dual layer structured aluminum
Color	White
Lens	Tempered glass + frosted PET
Lifetime	70,000 hrs L80
CRI	83+
Beam Angles	90° / 65° (136W models only)

Ambient Temperature	-22°C (-8°F) to 50°C (122°F)
Power Factor	cos ≥ 0.90
Protection	IP65
Warranty	5 Year Limited Warranty

LUMENS

Kelvin	93W	136W
4000K	12,800 lm	18,700 lm
5000K	13,020 lm	19,040 lm

PRODUCT ORDERING SELECTION

Part Number	Watts	Kelvin	Lumens	Beam Angle	Mounting Options	Other Options		
<input type="checkbox"/> HB-093-40-12800-90D	93W	4000K	12,800 lm	90°	<input type="checkbox"/> BKT - Bracket	<input type="checkbox"/> OSZ-IP65-V - Occupancy and Wireless Control Sensor		
<input type="checkbox"/> HB-093-50-13020-90D	93W	5000K	13,020 lm	90°	<input type="checkbox"/> Y72 - 6' Aircraft Cable Kit	<input type="checkbox"/> DONGLE-VLC - Controls light from Wireless Control Sensor on another light.		
<input type="checkbox"/> HB-136-40-18700-65D	136W	4000K	18,700 lm	65°		<input type="checkbox"/> WGD- Wire Guard		
<input type="checkbox"/> HB-136-50-19040-65D	136W	5000K	19,040 lm	65°		<input type="checkbox"/> EM40W-IP65 - Battery Backup (40W / 90Min / IP65)		
<input type="checkbox"/> HB-136-40-18700-90D	136W	4000K	18,700 lm	90°				
<input type="checkbox"/> HB-136-50-19040-90D	136W	5000K	19,040 lm	90°				

HB Series

The PERFORMANCE™

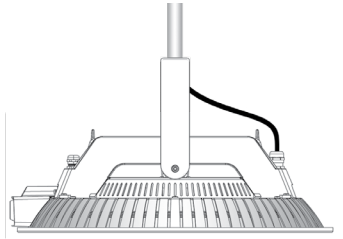
SOLAS RAY™ LIGHTING

5935 West 84th St. | Indianapolis, IN 46278 | 1-800-840-5635 | www.SolasRay.com

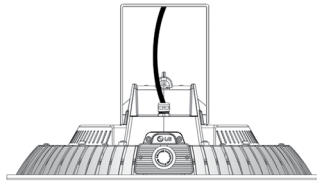
MOUNTING OPTIONS

#BKT - Bracket

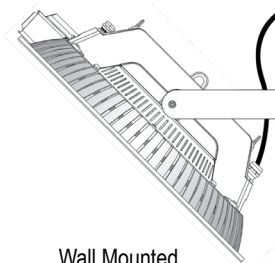
Bracket may be used for pendant mounting, ceiling mounting, and wall mounting.



Pendant Mounted

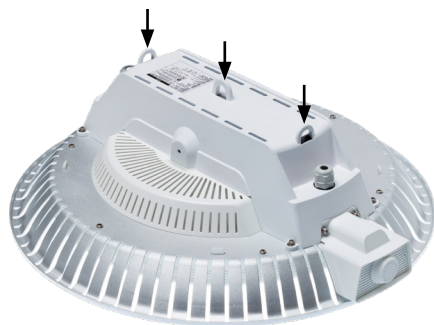
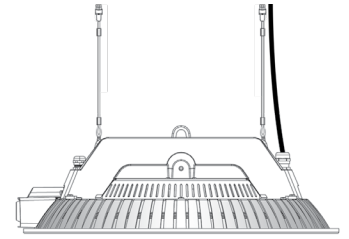


Ceiling Mounted



Wall Mounted

#Y72 - 6ft Aircraft Cable Kit



Center mounting loop and two aircraft cable mounting loops included standard.



Optional Wire Guard

MULTI-SENSOR / WIRELESS CONTROLS

Plug-In Control for Occupancy and Daylight Harvest Solutions

- Simply set-up with RCA SENSOR CONNECT System or plug-and-play
- Occupancy & daylight sensor
- IP65 multi sensor
- Wide sensor detection area
- Use single PIR with photocell
- The default time delay setting is 30 minutes

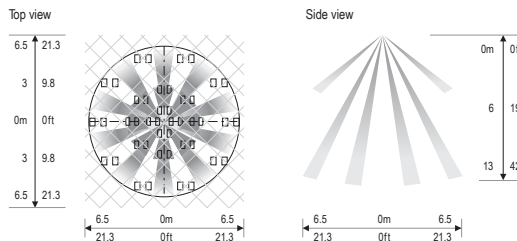


PN: DONGLE-VLC

Allows light to be controlled by a multi-sensor mounted on another light.



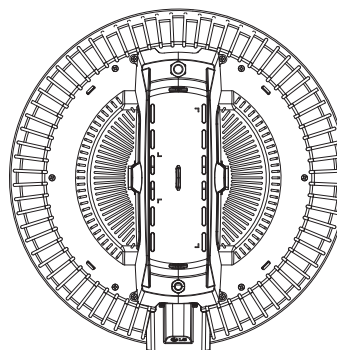
IP65 Multi-Sensor



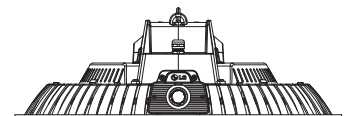
WEIGHTS AND DIMENSIONS

WEIGHTS

93W	136W
9.5 lb	9.7 lb



18.1" (460 mm)



6.2" (158 mm)

