



NSF Rated LED Solutions For Food Service/Processing Locations



National Sanitation Foundation Approved Lighting

Solas Ray™ Lighting manufactures multiple LED lighting solutions tested and certified to NSF requirements for use in food processing, packaging and storage facilities.

- **Designed For Food Service**

Solas Ray™ NSF rated fixtures are designed to excel in food service environments where cleanliness and sanitization are required for the safe handling and storage of food products. They are also well suited for agriculture and horticulture applications. Standard and hazardous location (HazLoc) NSF fixtures are available.

- **Washdown ready**

Solas Ray™ NSF fixtures are wash-down ready to make cleaning and sanitizing easy. Several models are IP69K rated to withstand intensive cleaning with high-pressure, high temperature jets.

- **Buy America Act (BAA)**



Many Solas Ray™ products are BAA compliant as they are designed/assembled in the U.S.A.

- **Inventory / Service**

We carry significant finished goods inventory in our Indianapolis, IN location ready to ship. We offer second-to-none service/expertise with representatives throughout the U.S. and Canada.



Standard Fixtures



The Shield™ - BANSF Series

Lumens: **13,500 - 31,000** | IP Rating: **IP66 / IP69K**

- Smooth domed top resists water accumulation
- IK10 impact resistance / DLC listed
- Built in surge protection



The Shield™ WD2 - WD2 Series

Lumens: **14,000 - 28,000** | IP Rating: **IP66 / IP69K**

- Smooth domed top resists water accumulation
- IK08 impact resistance
- Built in surge protection



The Beast™ - BL Series

Lumens: **5,800 - 48,600** | IP Rating: **IP66**

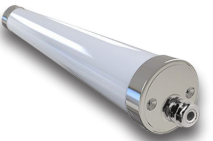
- 20" diameter high bay light with low glare
- DLC listed / built in surge protection
- Buy American Act Compliant (BAA)



The Performance™ - HB Series

Lumens: **12,800 - 19,040** | IP Rating: **IP65**

- ZigBee® wireless controls ready
- DLC Premium listed / built in surge protection
- Trade Agreement Act compliant (TAA)



The Cylinder™ - LSH Series

Lumens: **2,600 - 7,800** | IP Rating: **IP69K**

- Linear cylindrical fixture available in 2' / 4' / 5' lengths
- IK10 impact resistance / DLC listed
- Frosted or clear lens options



The Saber™ - LQPO Series

Lumens: **7,500 - 20,000** | IP Rating: **IP66 / IP69K**

- Ideal LED replacement for fluorescent lights
- NSF2 Rated / IK10 impact resistance
- Buy American Act compliant (BAA)



The Classic Vapor Tight - SV Series

Lumens: **2,700 - 24,350** | IP Rating: **IP65 / 66 / 67**

- Wide area lighting for wash-down applications
- UL 5VA fiberglass housing / DLC listed
- Buy American Act compliant (BAA)



The HB6 Series

Lumens: **10,800 - 28,000** | IP Rating: **IP66**

- High output linear bay light with 120° beam pattern
- DLC Premium listed / optional motion sensor
- Integrally formed 6063 one piece aluminum heat sink



Hazardous Location



The Foreman™ - HJBR Series

Lumens: **3,000 - 31,000** | IP Rating: **IP66 / IP67**

- Hazardous Location rated: C1D2 / C2D1 / C2D2 / C3
- IK08 / IK10 impact resistance / DLC Rated
- B5G vibration rated / UL1598 A marine rated



SOLAS RAY™ LIGHTING

Always The Right Light

(800) 840-5638 • SolasRay.com • quotes@solasray.com • 5935 West 84th Street • Indianapolis, IN 46275