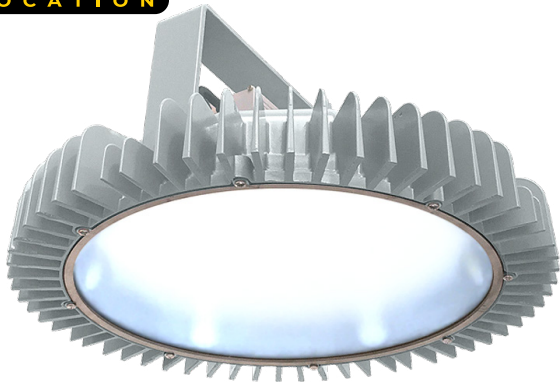


HH Series

The HazLoc BEAST™

Hazardous Location Lighting



5935 West 84th St. | Indianapolis, IN 46278 | 1-888-391-4822 | www.SolasRay.com

Cat. #	Type
Notes	

CERTIFICATIONS / RATINGS



CERTIFIED
UL 1598



IP66



CLASS / DIVISION

- Class I, Div 2, Groups A, B, C, D
- Class II, Div 2, Groups F, G

KEY FEATURES AND BENEFITS

- 20" Diameter design delivers optimal light output to large surface areas.
- Ambient temperature capabilities: -40°C to 65°C (149°F).
- Passive cooling radiator design for high temperature applications / locations.
- Corrosion proof – powder coated aluminum alloy housing.
- Gray nylon corrosion resistant powder coat.
- Angle mounted LEDs for high efficacy.
- Built-in 6kV DM (differential mode) and 10kV CM (common mode) surge protection.
- Proprietary silicone based potting compound used in driver for effective thermal conduction away from component.

SPECIFICATIONS

Voltage	120-277vAC / 277-480vAC
Wattage	49w / 104w / 144w / 175w / 219w / 260w / 328w
Color Temp	5000 (Standard) / 4000 Kelvin
Housing	Die-cast aluminum
Color	Gray
Coating	Corrosion resistant nylon powder-coat
Lens	Flat tempered glass
Beam Angle	150°
T-Rating	T5
Protection	IP66

Ambient Temperature	-40°C (-40°F) to 65°C (149°F)
NPT	3/4"
Lifetime	100,000 hrs L70
CRI	> 70
Power Factor	> 0.95
Warranty	5 Year Limited Warranty

LUMENS / EFFICACY

49w	104w	144w	175w	219w	260w	328w
5,800 lm	13,300 lm	18,000 lm	21,200 lm	25,600 lm	32,600 lm	39,600 lm
118 lm/w	128 lm/w	125 lm/w	121 lm/w	117 lm/w	126 lm/w	121 lm/w

PRODUCT ORDERING SELECTION

<input type="text"/>	<input type="text"/>	<input type="text" value="EX"/>	<input type="text"/>	<input type="text" value="GR"/>	<input type="text"/>	<input type="text"/>
Series/Watts	Kelvin	Driver	Voltage	Color	Mounting Options	Other Options
<input type="checkbox"/> HH06-049 (49w)	<input type="checkbox"/> 50 - 5000K	<input checked="" type="checkbox"/> EX - External	<input type="checkbox"/> U - 120-277vAC	<input checked="" type="checkbox"/> GR - Gray	<input type="checkbox"/> UB - Universal Bracket (Included)	<input type="checkbox"/> C5 - 5 Ft. Safety Cable
<input type="checkbox"/> HH12-104 (104w)	(standard)		<input type="checkbox"/> 48 - 277-480vAC		<input type="checkbox"/> PM3 - Pendant Mount 3"	<input type="checkbox"/> C10 - 10 Ft. Safety Cable
<input type="checkbox"/> HH18-144 (144w)	<input type="checkbox"/> 40 - 4000K				<input type="checkbox"/> PM6 - Pendant Mount 6"	
<input type="checkbox"/> HH22-175 (175w)					<input type="checkbox"/> PM12 - Pendant Mount 12"	
<input type="checkbox"/> HH27-219 (219w)					<input type="checkbox"/> PM18 - Pendant Mount 18"	
<input type="checkbox"/> HH32-260 (260w)					<input type="checkbox"/> PM24 - Pendant Mount 24"	
<input type="checkbox"/> HH40-328 (328w)					<input type="checkbox"/> PHS - Mounting Hook	
					<input type="checkbox"/> WMB - Wall Mount Bracket	

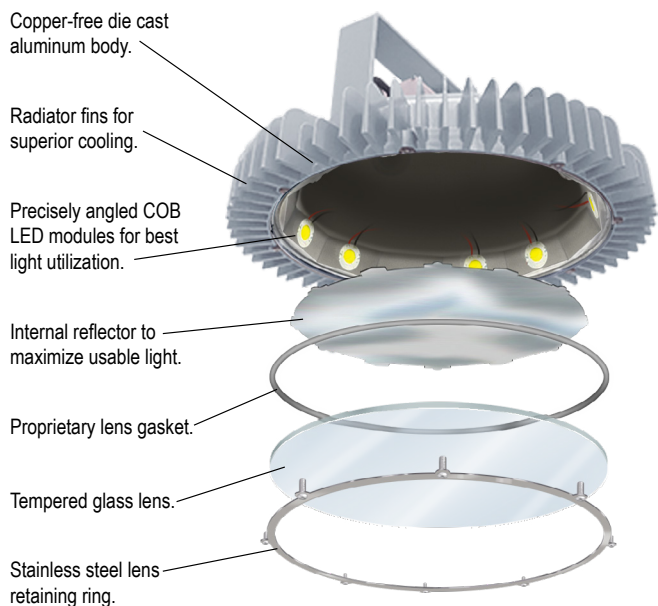
HH Series

The HazLoc BEAST™



5935 West 84th St. | Indianapolis, IN 46278 | 1-888-391-4822 | www.SolasRay.com

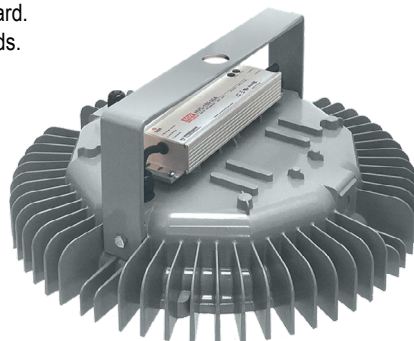
The Beast™ features the perfect combination of LEDs, positioning, power, reflectivity and more to provide superior benefits and unique advantages over other hazardous location industrial bay lighting.



MOUNTING OPTIONS

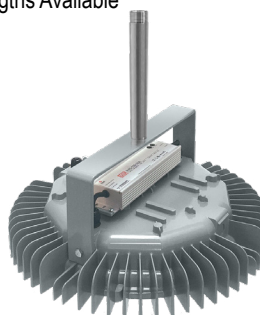
#UB - Universal Bracket

Included standard.
3/4" NPT threads.

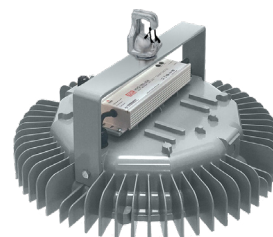


#PM(X) - Pendant Mount

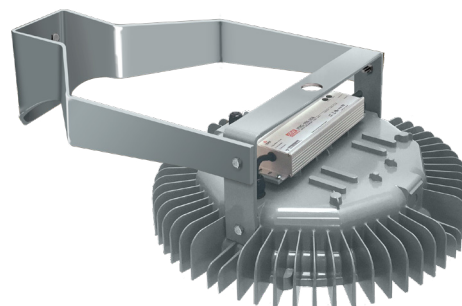
3" / 6" / 12" / 18" / 24"
Lengths Available



#PHS - Mounting Hook



#WMB - Wall Mount Bracket



WEIGHTS AND DIMENSIONS

WEIGHT

30 lb

