

EAG Series

The EAGLE™ Universal LED Flood Light



5935 West 84th St. | Indianapolis, IN 46278 | 1-800-840-5635 | www.SolasRay.com

Cat. #	Type
Notes	

CERTIFICATIONS / RATINGS

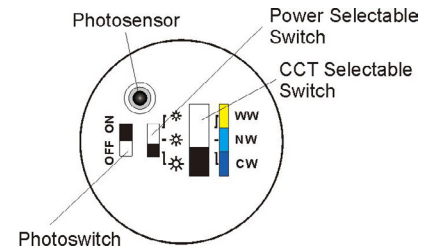


IP66



KEY FEATURES AND BENEFITS

- CCT and wattage selectable LED flood light.
- 10,500 to 52,500 lumens.
- Perfect for outdoor illumination applications including facades, exhibition centers, advertising boards, parking lots and more.
- Integrated photocell.
- Durable shatter resistant tempered glass / die cast aluminum construction.
- 6kV line-line, 10kV line-earth surge protection.
- 0-10V dimmable.
- Available in bronze or black.
- IK07 impact rated.
- IP66 rated.



4 Sizes

SELECTABLE
COLOR TEMPERATURE & POWER

SPECIFICATIONS

Voltage	120-277 VAC / 277-480 VAC
Wattage	Selectable 100W / 80W / 60W Selectable 150W / 120W / 90W Selectable 200W / 160W / 120W Selectable 300W / 240W / 180W
Color Temp	Selectable 3000 / 4000 / 5000 Kelvin
Housing	Die cast aluminum
Color	Bronze (RAL8019) / Black (RAL0177)
Lens	Tempered glass
Ambient Temperature	-40°C (-40°F) to 50°C (122°F)
Lifetime	100,000 hrs L70
CRI	Ra80

Beam Angles	7H x 7V (>130°)
Power Factor	0.92
Protection	IP66 / IK07
Warranty	5 Year Limited Warranty

LUMENS

Power	EAG-100	EAG-150	EAG-200	EAG-300
MAX Setting	17,500	26,250	35,000	52,500
MID Setting	14,000	21,000	28,000	42,000
MIN Setting	10,500	15,750	21,000	31,500

PRODUCT ORDERING SELECTION

EAG - [] - 345K - [] - [] - []

Series	Watts	Kelvin	Voltage	Color	Mounting Options
<input checked="" type="checkbox"/> EAG	<input type="checkbox"/> 100 - 100W / 80W / 60W Selectable <input type="checkbox"/> 150 - 150W / 120W / 90W Selectable <input type="checkbox"/> 200 - 200W / 160W / 120W Selectable <input type="checkbox"/> 300 - 300W / 240W / 180W Selectable	<input checked="" type="checkbox"/> 345K - 3000K / 4000K / 5000K Selectable	<input type="checkbox"/> U - 120-277 VAC <input type="checkbox"/> 48 - 277-480 VAC	<input type="checkbox"/> Z - Bronze (standard) <input type="checkbox"/> B - Black	<input type="checkbox"/> AB - Adjustable Bracket <input type="checkbox"/> SF - Slipfitter Mount

EAG Series

The EAGLE™

MOUNTING OPTIONS

#AB - Adjustable Bracket



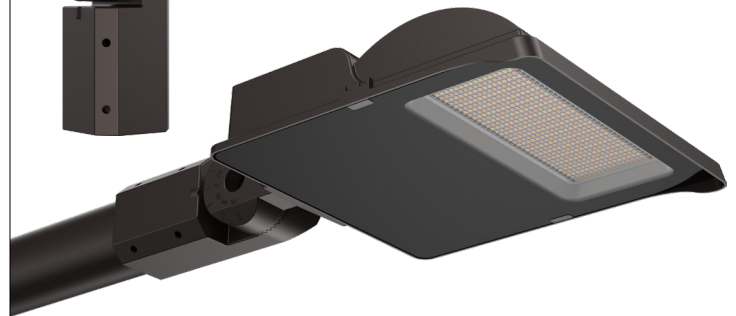
Adjusts +/- 90°



#SF - Slipfitter Mount



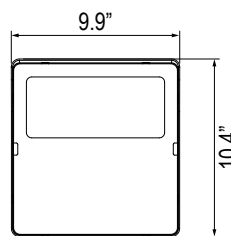
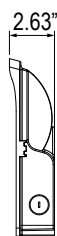
Adjusts +/- 90°
Fits standard 2-3/8" tenon.



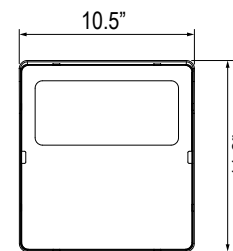
WEIGHTS AND DIMENSIONS

WEIGHTS / EPA

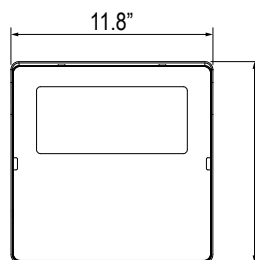
Model	Weight	EPA
EAG-100	6.81 lb	0.86 ft²
EAG-150	8.11 lb	0.95 ft²
EAG-200	8.93 lb	1.16 ft²
EAG-300	11.57 lb	1.56 ft²



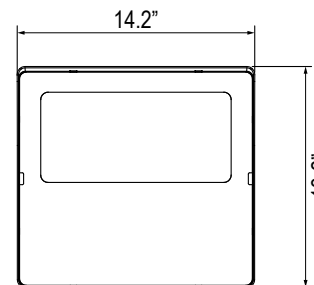
EAG-100



EAG-150



EAG-200



EAG-300