

# BL Series

## The BEAST™

Industrial High Bay LED Lighting



5935 West 84th St. | Indianapolis, IN 46278 | 1-800-840-5635 | www.SolasRay.com

Cat. #	Type
Notes	

### CERTIFICATIONS / RATINGS



**IP66**

### KEY FEATURES AND BENEFITS

- 20" Diameter design provides a large surface area to deliver optimal light output without the discomfort of glare.
- Superior passive cooling engineered for high temperature applications or locations.
- Angle mounted LEDs deliver light distribution similar to traditional HID lamps.
- Wide angle polycarbonate and wide angle acrylic drop lens evenly distributes light in all directions while also providing 10% uplighting.
- DLC approved.
- 1-10v dimming driver standard (If external access to dimming control wiring is needed, please request when ordering).
- Flat tempered glass lens option is available.
- Built-in 6kV DM (differential mode) and 10kV CM (common mode) surge protection.
- Aluminum housing with oven baked white nylon powder-coating.
- Proprietary silicone based potting compound used in driver for effective thermal conduction away from components.
- 10ft SOOW power cord included.



### SPECIFICATIONS

<b>Voltage</b>	120-277VAC / 277-480VAC / 250VDC
<b>Wattage</b>	49w / 104w / 144w / 175w / 219w / 260w / 328w / 384w
<b>Color Temp</b>	5000 (Standard) / 4000 Kelvin
<b>Housing</b>	Die-cast aluminum
<b>Color</b>	White
<b>Coating</b>	Corrosion resistant nylon powder-coat UV-resistant polycarbonate (standard) Flat tempered glass (optional)
<b>Lens</b>	Acrylic drop lens (optional) Flat tempered glass (optional)
<b>Hardware</b>	S304 stainless steel end caps

<b>Ambient Temperature</b>	-40°C (-40°F) to 65°C (149°F)
<b>NPT</b>	3/4"
<b>Lifetime</b>	100,000 hrs L70
<b>CRI</b>	≥ 70
<b>Power Factor</b>	> 0.95
<b>Protection</b>	IP66
<b>Warranty</b>	5 Year Limited Warranty

### LUMENS / EFFICACY

49w	104w	144w	175w	219w	260w	328w	384w
5,800 lm	14,000 lm	18,600 lm	22,400 lm	26,700 lm	33,300 lm	41,000 lm	48,600 lm
118 lm/w	135 lm/w	129 lm/w	128 lm/w	122 lm/w	128 lm/w	125 lm/w	127 lm/w

### PRODUCT ORDERING SELECTION

<input type="text"/>	-	<input type="text"/>	-	<b>EX</b>	-	<input type="text"/>	-	<b>WT</b>	-	<input type="text"/>	-	<input type="text"/>
<b>Series/Watts</b>		<b>Kelvin</b>		<b>Driver</b>		<b>Voltage</b>		<b>Color</b>		<b>Mounting Options</b>		<b>Other Options</b>
<input type="checkbox"/> BL06-049 (49w)		<input type="checkbox"/> 50 - 5000K (standard)		<input checked="" type="checkbox"/> EX - External		<input type="checkbox"/> U - 120-277VAC		<input checked="" type="checkbox"/> WT - White		<input type="checkbox"/> UB - Universal Bracket (Included)		<input type="checkbox"/> DLA - Acrylic Drop Lens
<input type="checkbox"/> BL12-104 (104w)						<input type="checkbox"/> 48 - 277-480VAC				<input type="checkbox"/> PM3 - Pendant Mount 3"		<input type="checkbox"/> GL - Flat Tempered Glass Lens
<input type="checkbox"/> BL18-144 (144w)		<input type="checkbox"/> 40 - 4000K				<input type="checkbox"/> 250VDC - 250VDC				<input type="checkbox"/> PM6 - Pendant Mount 6"		<input type="checkbox"/> C5 - 5 Ft. Safety Cable
<input type="checkbox"/> BL22-175 (175w)										<input type="checkbox"/> PM12 - Pendant Mount 12"		<input type="checkbox"/> C10 - 10 Ft. Safety Cable
<input type="checkbox"/> BL27-219 (219w)										<input type="checkbox"/> PM18 - Pendant Mount 18"		<input type="checkbox"/> MS - Motion Sensor
<input type="checkbox"/> BL32-260 (260w)										<input type="checkbox"/> PM24 - Pendant Mount 24"		<input type="checkbox"/> N - NSF Food Service Rating
<input type="checkbox"/> BL40-328 (328w)										<input type="checkbox"/> PHS - Pendant w/ Safety Hook		<input type="checkbox"/> EM-90 - Battery Backup
<input type="checkbox"/> BL50-384 (384w)										<input type="checkbox"/> WMB - Wall Mount Bracket		<input type="checkbox"/> EMA40ACT-170 - Battery Backup
										<input type="checkbox"/> CRMB - Crane Mount Bracket		<input type="checkbox"/> WGHB - Wire Guard

# BL Series

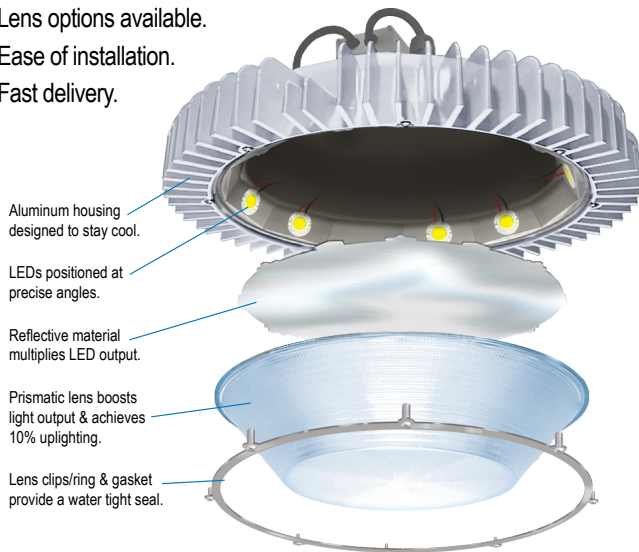
## The BEAST™



5935 West 84th St. | Indianapolis, IN 46278 | 1-800-840-5635 | www.SolasRay.com

The Beast™ features the perfect combination of LEDs, positioning, power, reflectivity, prisms and more to provide superior benefits and unique advantages over other industrial bay lighting.

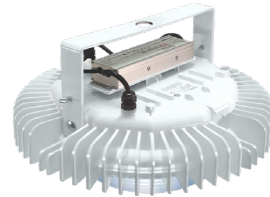
- Efficient 118-135 lumen per watt power utilization.
- 220° + wide light distribution spread.
- 10% uplighting eliminates the “cave effect”.
- Fewer bay lights needed and lights more efficiently.
- NSF rating for wet locations and hose down (optional).
- Includes universal bracket.
- Lens options available.
- Ease of installation.
- Fast delivery.



### MOUNTING OPTIONS

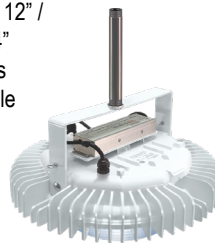
#### #UB - Universal Bracket

Included standard.  
3/4" NPT threads.



#### #PM(X) - Pendant Mount

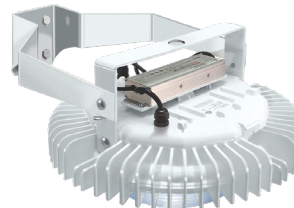
3" / 6" / 12" /  
18" / 24"  
Lengths  
Available



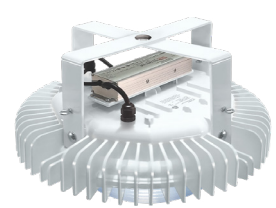
#### #PHS - Pendant w/ Safety Hook



#### #WMB - Wall Mount Bracket



#### #CRMB - Crane Mount Bracket

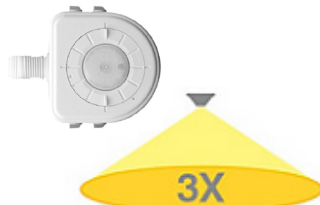


### OTHER OPTIONS

#### #WGHB - Wire Guard



#### #MS - Motion Sensor



#### #EM-90 - Battery Backup



#### #EMA40ACT-170 - Battery Backup



For 219W models and lower.

### WEIGHTS AND DIMENSIONS

#### WEIGHTS

BL06	24 lb
BL12	24.5 lb
BL18	25 lb
BL22	25 lb
BL27	25 lb
BL32	26 lb
BL40	27 lb
BL50	28 lb

