

HTRT Series

The ATTENDANT™ C Series

Hazardous Location Lighting



CRUSH
RESISTANT
HOUSING

MARINE
GRADE

High Vibration
RESISTANCE



SOLAS RAY™ LIGHTING

5935 West 84th St. | Indianapolis, IN 46278 | 1-888-391-4822 | www.SolasRay.com

Cat. #	Type
Notes	

CERTIFICATIONS / RATINGS



CLASS / DIVISION

- Class I, Div 2, Groups A, B, C, D

KEY FEATURES AND BENEFITS

- Vibration / anti-resonance design.
- Crush resistant with high impact resistance.
- Marine grade housing / salt water spray resistant.
- Atmospheric pressure tolerance up to 10 meter depth.
- Factory installed stainless steel cable gland included standard. Precision machined and torque tested.
- IP67 rating.



Included cable gland

SPECIFICATIONS

Voltage	120VAC / 277VAC / 480VAC
Wattage	40W
Color Temp	3000 / 5000 Kelvin
Housing	Coated copper free aluminum alloy
Color	Gray
Lens	Tempered glass
Lifetime	60,000 hrs L70
CRI	≥ 80 (3000K) / ≥70 (5000K)
Beam Angles	X-105° / Y-105°
Power Factor	cos ≥ 0.9, cos ≥ 0.87 (480vAC)
Protection	IP67 / NEMA 6
Warranty	5 Year Limited Warranty (See non-hazardous location applications for warranty exceptions)

LUMENS

Kelvin	40w
3000K	3,800
5000K	4,000

CLASS / DIVISION / TEMPERATURE

Models	Class / Division	Ambient Temperature	T-Rating	IP Rating
ALL	Class I Division 2 Groups A, B, C, D	-40°C ~ +40°C (-40°F ~ +104°F)	T4	IP67

HIGH AMBIENT TEMPERATURE APPLICATIONS

Non-Hazardous Location Applications - Temperature / Warranty Information

Some models of this light are rated for high ambient temperature operation in **non-hazardous locations**. In hazardous locations, the lights **MUST** be operated within the UL rated temperature range detailed in the Class/Division/Temperature chart above. Warranty limitations apply to high ambient temp. operation.

Models	Max Ambient Temperature	Warranty
All Models	85°C (185°F)	2 Year Limited Warranty
All Models	65°C (149°F)	5 Year Limited Warranty

PRODUCT ORDERING SELECTION

HTRT	040			FG		
Series	Watts	Kelvin	Voltage	Lens	Mounting Options	Other Options
<input checked="" type="checkbox"/> HTRT	<input checked="" type="checkbox"/> 040 - 40W	<input type="checkbox"/> 30 - 3000K <input type="checkbox"/> 50 - 5000K	<input type="checkbox"/> 120 - 120VAC <input type="checkbox"/> 277 - 277VAC <input type="checkbox"/> 480 - 480VAC	<input checked="" type="checkbox"/> FG - Flat Glass (Tempered)	<input type="checkbox"/> AB - Adjustable Bracket (Wall, Ceiling & Hanging) <input type="checkbox"/> PM - Pendant Mount <input type="checkbox"/> CM - Ceiling Mount <input type="checkbox"/> SM25 - 25° Pole Stanchion <input type="checkbox"/> SM90 - 90° Pole Stanchion	<input type="checkbox"/> FLC - Fluorocarbon Coating <input type="checkbox"/> REF10 - 10" Reflective Hood <input type="checkbox"/> REF12 - 12" Reflective Hood

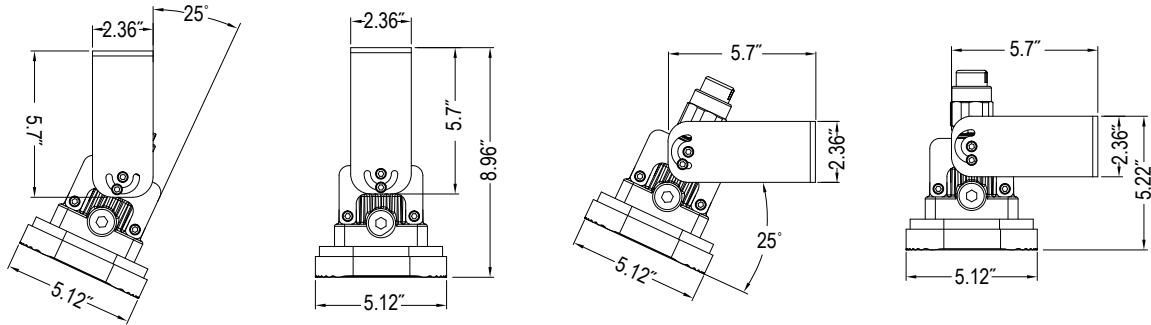
HTRT Series

The ATTENDANT™ C Series

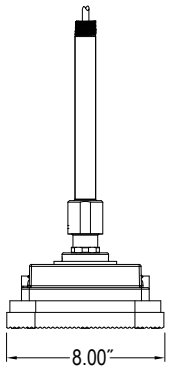
MOUNTING OPTIONS

#AB - Adjustable Bracket

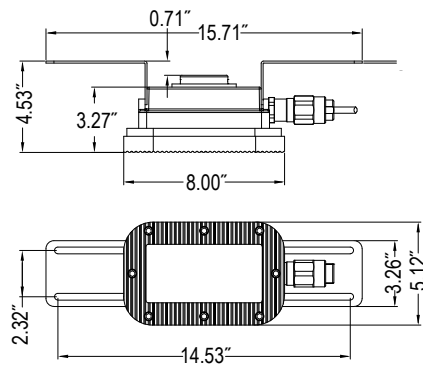
Can be used for ceiling or wall mounting



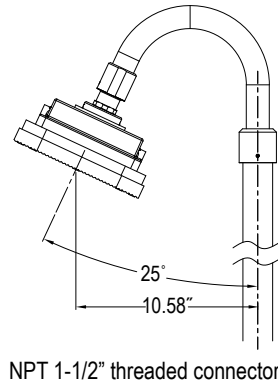
#PM - Pendant Mount



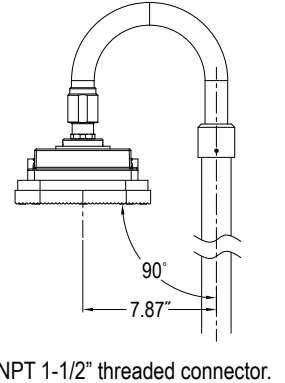
#CM - Ceiling Mount



#SM25 - 25° Pole Stanchion

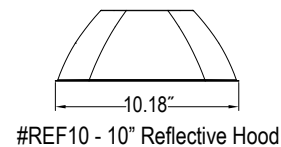
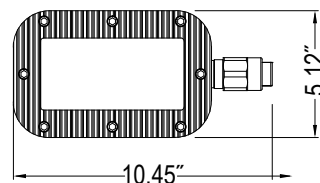
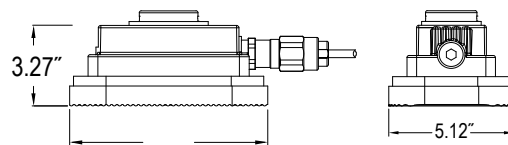


#SM90 - 90° Pole Stanchion

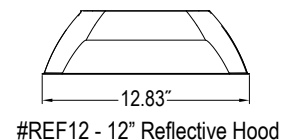


WEIGHTS AND DIMENSIONS

Weight	
Without Bracket	8.1 lbs
With Bracket	10.1 lbs



#REF10 - 10" Reflective Hood



#REF12 - 12" Reflective Hood

