

# SOPH Series

## The SOLAR PHOTON™

Solar Powered LED Area Lighting



5935 West 84th St. | Indianapolis, IN 46278 | 1-800-840-5635 | www.SolasRay.com

Cat. #	Type
Notes	



**SOLAR  
POWERED**

### KEY FEATURES AND BENEFITS

- Convenient LED light, solar panel, and battery integrated into a single unit.
- Adjustable angle.
- Up to 12,000 lumens, 40, 50 and 60 watt versions available.
- High conversion efficiency mono-crystalline photovoltaic solar panel.
- Long life and high temperature resistance LiFePO4 battery.
- 8 hour charge can power light up to 3 days in intelligent control mode, optional remote control available for intelligent control reprogramming.
- PIR motion sensor.
- Hybrid dual-powered option available - AC power takes over if battery is low.



Includes pole/side mount.  
Allows for up to 15° tilt up or  
down. Fits 2 3/8" tenon.

Optional remote control  
available for adjusting  
intelligent controls. See p2.



### SPECIFICATIONS

<b>Wattage</b>	40w / 50w / 60w
<b>Color Temp</b>	3000 / 4000 (Std) / 5000 Kelvin
<b>Housing</b>	Aluminum Alloy
<b>Color</b>	Silver (Std) / Bronze / Black (powder coated)
<b>Lens</b>	Polycarbonate
<b>Lifetime</b>	101,000 hrs L70
<b>Distribution Pattern</b>	Type II med (Std) / Type III short / Type V short
<b>Working Mode</b>	Intelligent control
<b>Control</b>	Timer dimming / PIR sensor
<b>Ambient Temperature</b>	0°C (32°F) to 50°C (122°F) recommended, for colder temps - see Application Guide
<b>Protection</b>	IP65
<b>Warranty</b>	3 Year Limited Warranty

#### LUMENS

Model	40w	50w	60w
<b>Lumens</b>	8,000	10,000	12,000

### BATTERY (Built-In)

With their high temperature resistance, large current discharge and long life cycle rating, LiFePO4 batteries are preferable for use in solar powered lights.


<b>Type</b>	LiFePO4 (Lithium Iron Phosphate)
<b>Run Time</b>	Up to 3 days (intelligent control) on full charge Up to 8 hours at 100% brightness
<b>Life Cycle</b>	>2000 cycles
<b>Capacity</b>	24Ah (40w) / 30Ah (50w) / 36Ah (60w)
<b>Charge Time</b>	>6 hrs (40w) / >7 hrs (50w) / >9hrs (60w)

### SOLAR PANEL (Built-In)

Mono-crystalline is the preferred type of panel for solar powered lights due to their superior efficiency and lifespan. Features a 21% conversion rate, which is 30% higher compared to traditional solar panels.

<b>Type</b>	High efficiency mono-crystalline
<b>Charge Controller</b>	MPPT (Maximum Power Point Tracking - DC to DC converter that optimizes the match between the battery and solar panel)

### PRODUCT ORDERING SELECTION

<b>SOPH</b>	-		-		-		-	
<b>Series</b>	<b>Watts</b>	<b>Kelvin</b>	<b>Distribution Pattern</b>	<b>Color</b>	<b>Mounting Options</b>	<b>Other Options</b>		
<input checked="" type="checkbox"/> SOPH	<input type="checkbox"/> 040 - 40w <input type="checkbox"/> 050 - 50w <input type="checkbox"/> 060 - 60w	<input type="checkbox"/> 30 - 3000K <input type="checkbox"/> 40 - 4000K (Std) <input type="checkbox"/> 50 - 5000K	<input type="checkbox"/> II - Type II Medium (Std) <input type="checkbox"/> III - Type III Short <input type="checkbox"/> V - Type V Short	<input type="checkbox"/> SI - Silver (Std) <input type="checkbox"/> BR - Bronze <input type="checkbox"/> BL - Black	<input type="checkbox"/> LP - L-Shape Pole Mount Adaptor <input type="checkbox"/> LS - L-Shape Square Pole Mount Adaptor <input type="checkbox"/> TP - T-Shape Pole Mount Adaptor <input type="checkbox"/> TS - T-Shape Square Pole Mount Adaptor	<input type="checkbox"/> AAM - Adjustable Angle Module (Allows led panels to tilt +/- 30°) <input type="checkbox"/> HYB - Hybrid Dual-Powered <input type="checkbox"/> BS - Bird Spikes		
Include 1 SOPH-REM Remote Control 								

# SOPH Series

*The SOLAR PHOTON™*



5935 West 84th St. | Indianapolis, IN 46278 | 1-800-840-5635 | www.SolasRay.com

## MOUNTING OPTIONS

### Included Pole/Side Mount (Tenon Slipfitter)

Included mount allows for pole top mounting or side entry mounting. Allows for upward or downward tilt up to 15°. For 2 3/8" tenon.



Pole top configuration



Side entry configuration

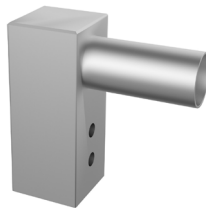


### #LP - L-Shape Pole Mount



Fits 3 1/2" pole top or tenon

### #LS - L-Shape Square Pole Mount



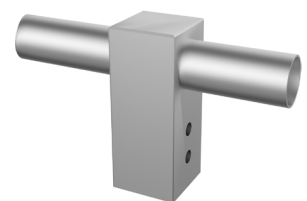
Fits 4" square pole

### #TP - T-Shape Pole Mount



Fits 2 3/8" tenon

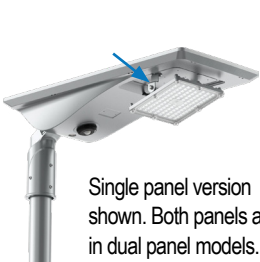
### #TS - T-Shape Square Pole Mount



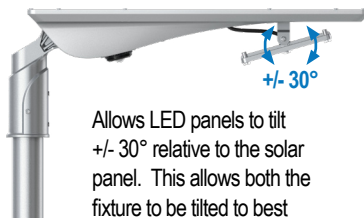
Fits 4" square pole

## OTHER OPTIONS AND ACCESSORIES

### #AAM - Adjustable Angle Module



Single panel version shown. Both panels adjust in dual panel models.



Allows LED panels to tilt +/- 30° relative to the solar panel. This allows both the fixture to be tilted to best absorb sunlight and the light to be directed where needed most.

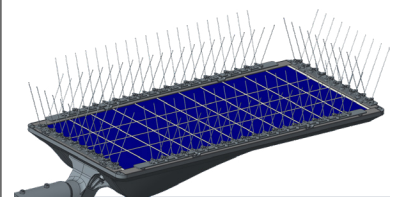
### #SOPH-REM - Remote Control

**Remote Control**  
Required to change intelligent control from default settings. For all non-hybrid models.



**Must be ordered separately.**  
P/N: SOPH-REM

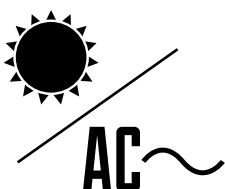
### #BS - Bird Spikes



Prevents birds from landing or nesting on the solar pannel.

### #HYB - Hybrid Dual-Power

#### HYBRID



#### Never run out of battery power

When the battery storage is depleted (the battery voltage is lower than 9.6V), the Solar Photon™ will automatically switch to AC supplied power. When the solar power supply sufficiently recharges the battery, the system will automatically switch back to battery power.

#### Specifications

Input Voltage: 100-277 VAC, 50/60 Hz  
Power Factor: >0.9  
Surge Protection: 6kV line-earth / 4kV line-line

#### Features

- Constant current LED driver added
- Hybrid controller

**Note:** Hybrid models require a different remote control than standard models.



Include 1 SOPH-HYR Remote Control

# SOPH Series

*The SOLAR PHOTON™*

**SOLAS RAY™ LIGHTING**

5935 West 84th St. | Indianapolis, IN 46278 | 1-800-840-5635 | www.SolasRay.com

## APPLICATION GUIDE

### TEMPERATURE ZONE MAP



Temperature affects battery performance reducing the total output of a fully charged battery as it gets colder. Recommended use of the Solar Photon™ for the above temperature zones are as follows:

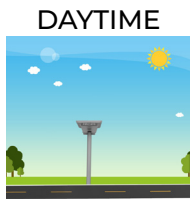
**Zone 1** - Not recommended for use in this zone.

**Zone 2** - May be used in this zone. We recommend reducing intelligent control settings to 1/2 brightness of factory default settings.

**Zone 3** - Recommended for this zone.

## INTELLIGENT CONTROL MODE

Factory default settings of intelligent control mode.



The light continuously charges during daylight hours.



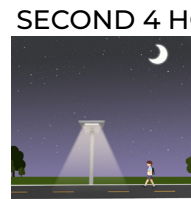
100% brightness is maintained for the first 30min of night.



50% brightness when presence is detected in first 4 hours.



10% brightness when no presence is detected in first 4 hours.



20% brightness when presence is detected in second 4 hours.



10% brightness when no presence is detected in second 4 hours.



10% brightness for the remainder of the night.

Use optional remote to change settings (purchased separately).

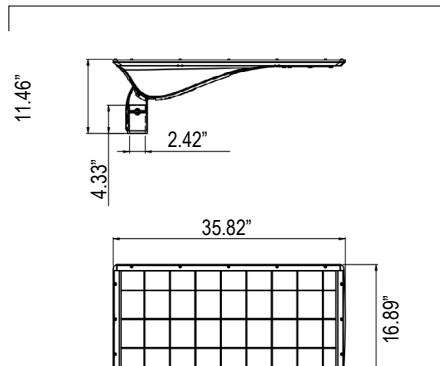


## WEIGHTS, EPA, BUG RATINGS AND DIMENSIONS

### WEIGHTS / EPA / BUG

Model	40w	50w	60w
Weight	30.65 lb	31.75 lb	33.10 lb
EPA	4.95 ft <sup>2</sup>		
B (Back)	1	2	2
U (Up)	0	0	0
G (Glare)	1	1	2

### POLE TOP CONFIGURATION



### SIDE ENTRY CONFIGURATION

