

# LED



5935 West 84th St. | Indianapolis, IN 46278 | 1-800-840-5635 | [www.SolasRay.com](http://www.SolasRay.com)

## The SENTINEL Series Hazardous Location Lighting

### HJCR1L

100 - 277vAC / 200 - 480vAC



Cat. #	Type
Notes	

### DESIGNATIONS



### KEY FEATURES AND BENEFITS

- 16" Diameter design for incredible light output to large surface areas.
- Class 1 Division 1 - Groups C, D (Flammable Gases & Vapors).
- Class 1 Division 2 - Groups A, B, C, D (Flammable Gases & Vapors).
- Class 2 Division 1 - Groups E, F, G (Combustible Dusts).
- Class 2 Division 2 - Groups E, F, G (Combustible Dusts).
- Class 3 Divisions 1 & 2.
- Ambient temperature capabilities: -40°C to 60°C (140°F).
- Corrosion proof – Coated aluminum alloy (copper free) housing.
- Gray nylon corrosion resistant powder coat.

### SPECIFICATIONS

<b>NAME</b>	The Sentinel
<b>Category</b>	Hazardous Area Lighting
<b>Model #</b>	HJCR1L
<b>Voltage</b>	100 - 277vAC or 200 - 480vAC
<b>Ambient Temperatures</b>	-40°C to 60°C (149°F)
<b>T – Rating</b>	T4
<b>Housing</b>	Coated Copper Free Aluminum Alloy
<b>Color</b>	Gray
<b>Lens</b>	Flat Tempered Glass
<b>IP Rating</b>	IP66
<b>Wattage</b>	30w / 40w / 60w / 80w / 100w 150w / 200w / 250w / 280w
<b>Efficacy</b>	Up to 140 lm/w
<b>Lifetime</b>	50,000 hr. at L70
<b>CRI</b>	>70 cool white
<b>Beam Angle</b>	40°, 60°, 90°, 120°
<b>Power Factor</b>	>0.95

<b>Color Temp</b>	4000 & 5000 Kelvin
<b>Weight</b>	26 lbs.
<b>Dimensions</b>	16" diameter x 13.4"
<b>NPT</b>	3/4"
<b>Warranty</b>	5-Year Limited

30 watts	4,200 Lumens
40 watts	5,600 Lumens
60 watts	8,400 Lumens
80 watts	11,200 Lumens
100 watts	14,000 Lumens
150 watts	21,000 Lumens
200 watts	28,000 Lumens
250 watts	35,000 Lumens
280 watts	39,200 Lumens

### PRODUCT ORDERING SELECTION

<input type="text"/>	<input type="text"/>	<input type="text"/>	<input type="text"/>	<input type="text"/>	<input type="text"/>	<input type="text"/>
<b>Series</b>	<b>Type-Watts</b>	<b>Kelvin</b>	<b>Voltage</b>	<b>Beam Angle</b>	<b>Mounting Options</b>	<b>Other Options</b>
HJCR1L	<input type="checkbox"/> 030 - 30 Watts <input type="checkbox"/> 150 - 150 Watts <input type="checkbox"/> 040 - 40 Watts <input type="checkbox"/> 200 - 200 Watts <input type="checkbox"/> 060 - 60 Watts <input type="checkbox"/> 250 - 250 Watts <input type="checkbox"/> 080 - 80 Watts <input type="checkbox"/> 280 - 280 Watts <input type="checkbox"/> 100 - 100 Watts	<input type="checkbox"/> 40 - 4000K <input type="checkbox"/> 50 - 5000K	<input type="checkbox"/> U - 120 - 277v <input type="checkbox"/> 48 - 347- 480v	<input type="checkbox"/> 40 - 40° <input type="checkbox"/> 60 - 60° <input type="checkbox"/> 90 - 90° <input type="checkbox"/> 120 - 120° (standard)	<input type="checkbox"/> HJWA - Wall Arm <input type="checkbox"/> HJPS90 - 90° Pole Stanchion <input type="checkbox"/> HJTB - Trunnion (standard) <input type="checkbox"/> HJCJB - Ceiling Junction Box <input type="checkbox"/> HJPP - Pendant Pipe <input type="checkbox"/> HJPS25 - 25° Pole Stanchion <input type="checkbox"/> HJW25 - 25° Junction Box Wall Arm <input type="checkbox"/> HJW90 - 90° Junction Box Wall Arm	<input type="checkbox"/> HJDR - Dome Reflective Hood <input type="checkbox"/> HJAR - Angled Reflective Hood <input type="checkbox"/> GL-HJGU - Glass Globe with Wire Guard



# LED



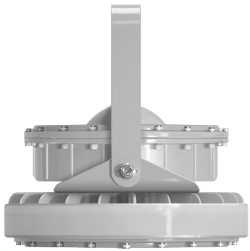
5935 West 84th St. | Indianapolis, IN 46278 | 1-800-840-5635 | [www.SolasRay.com](http://www.SolasRay.com)

## The SENTINEL Series HazLoc

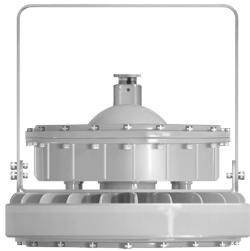
### HJCRIL

100 - 277vAC / 200 - 480vAC

#### MOUNTING



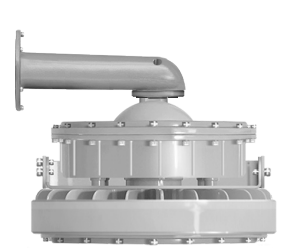
Trunnion Bracket - #HJTb



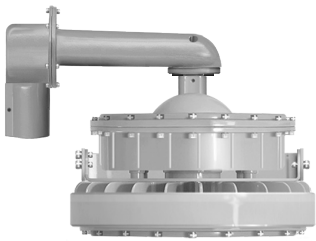
Ceiling Junction Box - #HJCJB



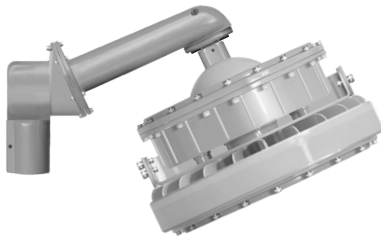
Pendant Pipe - #HJPP



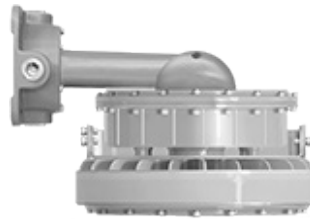
Wall - #HJWA



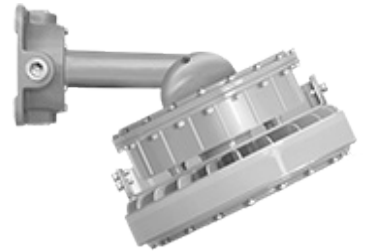
90° Pole Stanchion  
#HJPS90



25° Pole Stanchion  
#HJPS25



90° Junction Box  
Wall Arm #HJW90



25° Junction Box  
Wall Arm #HJW25



Glass Globe Lens  
with Wire Guard  
#GL-HJGU

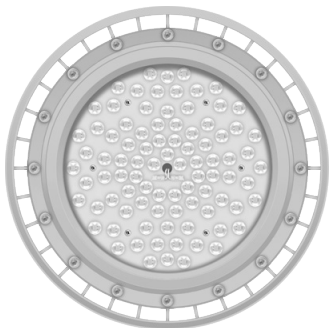


Angled Reflective Hood  
#HJAR

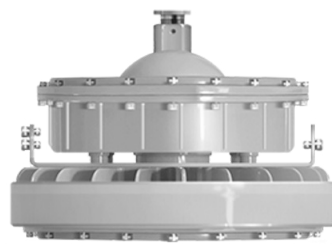


Dome Reflective Hood  
#HJDR

#### DIMENSIONS



16" Diameter



16" Diameter

13.4" Height

#### PRODUCT DESIGNATIONS



Learn More About Class / Division with a Button Click.



Specifications and data are subject to change without notice.