



The PHOENIX High Lumen 2x2 Flat Panel

PHL

by



120 - 277vAC



2x2

Cat. #	Type
Notes	

DESIGNATIONS



KEY FEATURES AND BENEFITS

- Robust Integrated Heat Sink specifically designed to provide high lumen output.
- Polycarbonate diffuser with precision pattern has a unified glare rating under 15.
- Edge lit fixture interacts with diffuser to evenly distribute 19,500 lumens.
- The high output 150 Watts / 19,500 lumens available in 5000K.
- Earthquake hooks and safety cable factory installed and standard.
- Performs as a lay-In panel.
- 0-10 V Dimming driver standard.
- Five Year limited warranty.

Ideal for larger areas, higher ceiling rooms, auto dealerships, hotel lobbies, casinos, retailers and so much more.

SPECIFICATIONS

Name	The Phoenix
Category	Lay-In Flat Panel
Model	PHL Series
Color	White
Housing	Aluminum Alloy
Voltage	120-277vAC
Ambient Temperature	Ambient -25°C (-14°F) to 45°C (113°F)
Color Temp	5000K
Beam Angles	120°
Efficacy	130 Lumens per Watt
Lifetime L80	50,000 hr. at L70
CRI	80+
Sizes	2x2: 23.75"W x 23.75"L
Warranty	5-Year Limited

Kelvin Based Lumen Output

CCT	150 Watts
5000K	19,500 lm

PRODUCT ORDERING NUMBER

Product	Watts	CCT/Kelvin	Type	Voltage	Beam Angle	Controls	Size	Manufacturer	Order #
P	150 Watts	5000K	T	120-347vAC	120°	0-10V Dimming	2'x2'	RCA Lighting	P15050TB1041



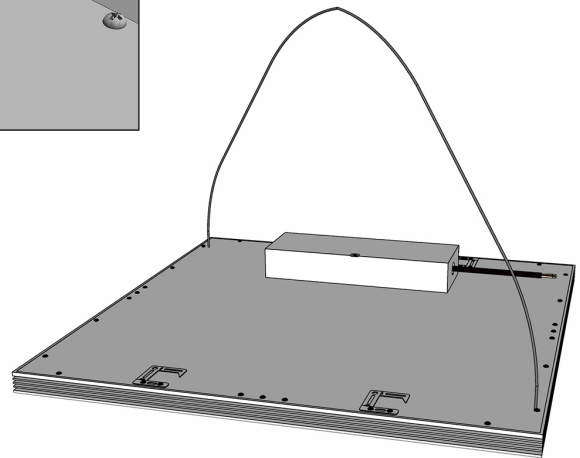
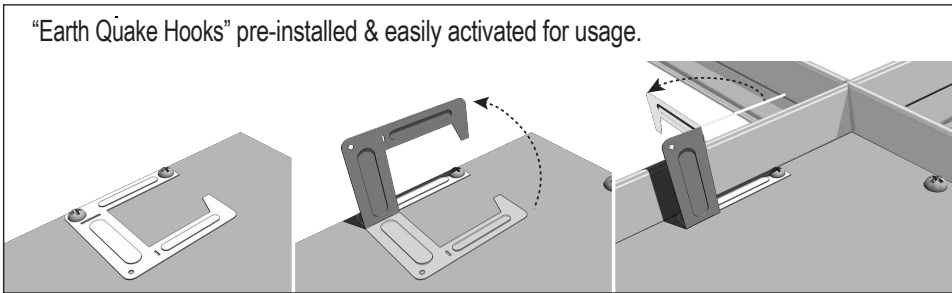
LED

The PHOENIX High Lumen 2x2 Flat Panel

PHL

120 - 277vAC

STANDARD FEATURES

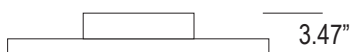
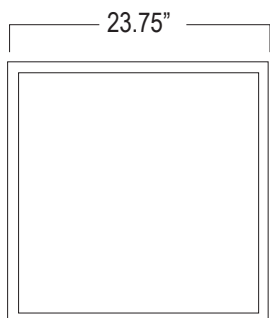


60" length of safety cable is factory installed.

DIMENSIONS

2 x 2 Flat Panel

Weight
2 x 2
10.93 lbs.



Specifications and data are subject to change without notice.

PRODUCT DESIGNATIONS

