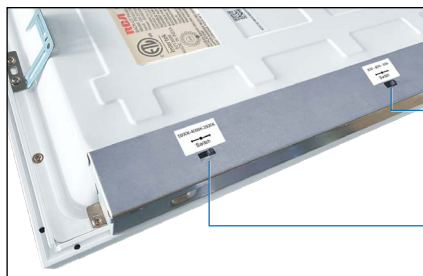
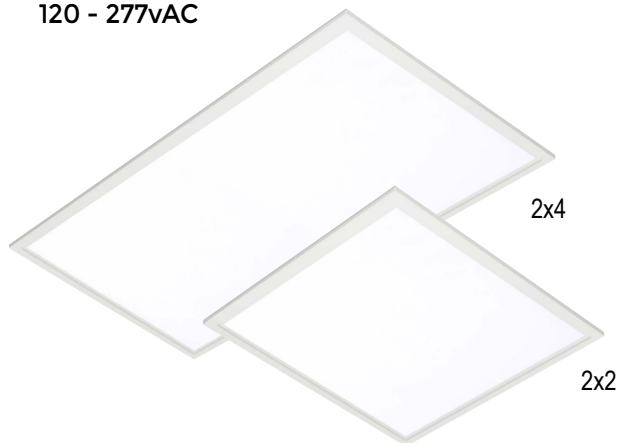


# CCT and TUNABLE Flat Panel Lighting

## FPS

120 - 277vAC



Set Switch for 30, 40 and 50 Watt setting.

Set Switch for 3500K, 4000K and 5000K CCT.

Cat. #	Type
Notes	

### DESIGNATIONS



### KEY FEATURES AND BENEFITS

- Adjust flat panel color temp and wattage for perfect lighting condition.
- Tune the fixture to any one of the 3 wattage settings.
- Tune the color temperature to one of the 3 color temps, 3500K, 4000K & 5000K.
- Sealed to prevent debris, dust and foreign material entry.
- DLC Premium and ETL certified.
- Dimming driver standard.
- Lightweight aluminum housing designed for lay-in or troffer replacement.
- Five Year limited warranty.

Ideal for the office, healthcare facilities, education, retail space, hospitality and more.

### SPECIFICATIONS

<b>Name</b>	Tunable Flat Panel Lay-In
<b>Category</b>	New and Troffer Replacement Flat Panels
<b>Model</b>	FPS Series
<b>Color</b>	White
<b>Housing</b>	Aluminum Alloy
<b>Voltage</b>	120-277vAC
<b>Ambient Temperature</b>	Ambient -25°C (-14°F) to 45°C (113°F)
<b>Tunable Color Temp</b>	3500K, 4000K, 5000K
<b>Beam Angles</b>	110°
<b>Efficacy</b>	Up to 140 Lumens per Watt
<b>Lifetime L80</b>	50,000 hr. at L <sub>80</sub>
<b>CRI</b>	<86

<b>Power Factor</b>	≥0.95
<b>Sizes</b>	2x2: 23.75"W x 23.75"L 2x4: 23.75"W x 47.75"L
<b>Warranty</b>	5-Year Limited

Flat Panel Size	2x2			2x4		
<b>Tunable Wattages</b>	20w	30w	40w	30w	40w	50w
<b>Delivered Lumens</b>	2,500	3,750	5,000	4,200	5,600	7,000

### PRODUCT ORDERING SELECTION

ORDER NUMBER	SIZE	WATTS	COLOR TEMPERATURE	LUMENS	LUMENS/WATT	BEAM ANGLE	CONTROLS
<input type="checkbox"/> FPS1A1TB1041	2x2	Tunable to 20W, 30W & 40W	Tunable to 3500K, 4000K & 5000K	Up to 5,000	125 lm/wt	110°	0-10 V Dimmer
<input type="checkbox"/> FPS1A1TB1011	2x4	Tunable to 30W, 40W & 50W	Tunable to 3500K, 4000K & 5000K	Up to 7,000	140 lm/wt	110°	0-10 V Dimmer
<input type="checkbox"/> EZJB - Add EZ j-box for all fixtures in this order ( <a href="#">LINK TO VIDEO</a> )							

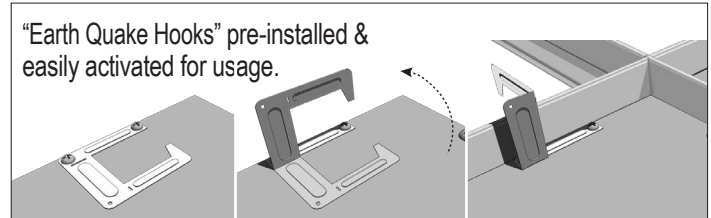


# CCT and TUNABLE Flat Panel

## FPS

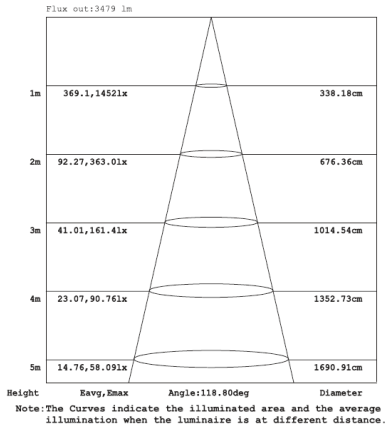
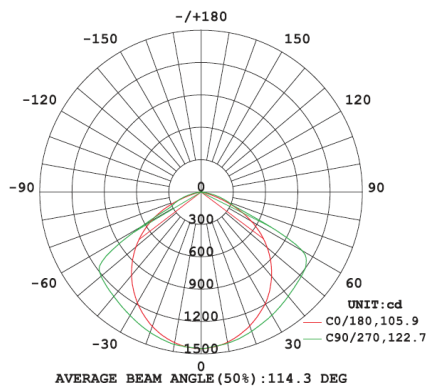
120 - 277vAC

### EASY-ACCESS J-BOX OPTION and EARTHQUAKE HOOK (Standard)



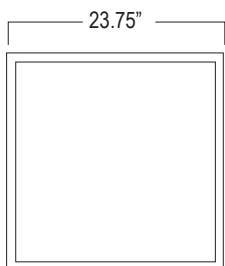
## PHOTOMETRICS

LUMINOUS INTENSITY DISTRIBUTION DIAGRAM

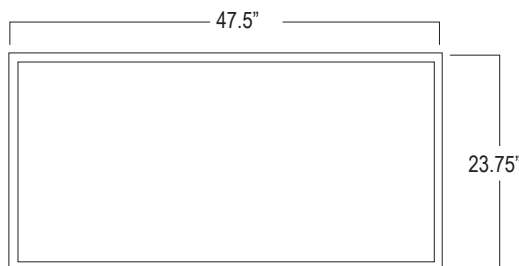


## DIMENSIONS

2 x 2 Flat Panel



2 x 4 Flat Panel



WEIGHT RANGE

2 x 2 | 2 x 4  
8 lbs. | 14 lbs.

1.77"

## PRODUCT DESIGNATIONS

